

DIS-T970

IP STANDARD BOX CAMERA

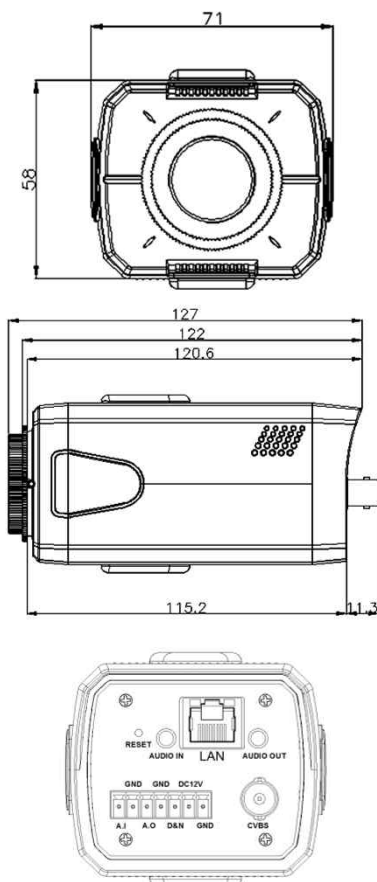


Main Features

- 1/2.8" 2.0μm Pixel Sony Starvis Color CMOS Sensor
- 5Mega Pixels (Max. 1920p)
- C / CS Lens Mountable
- TDN ICR Mechanism Built-in
- WDR / 3D-NR Supported
- POE Interface Built-in
- Onvif Ver. 17.06 Compatible with H.265, H.264 and MJPEG
- Analog Composite Video Out



Dimension

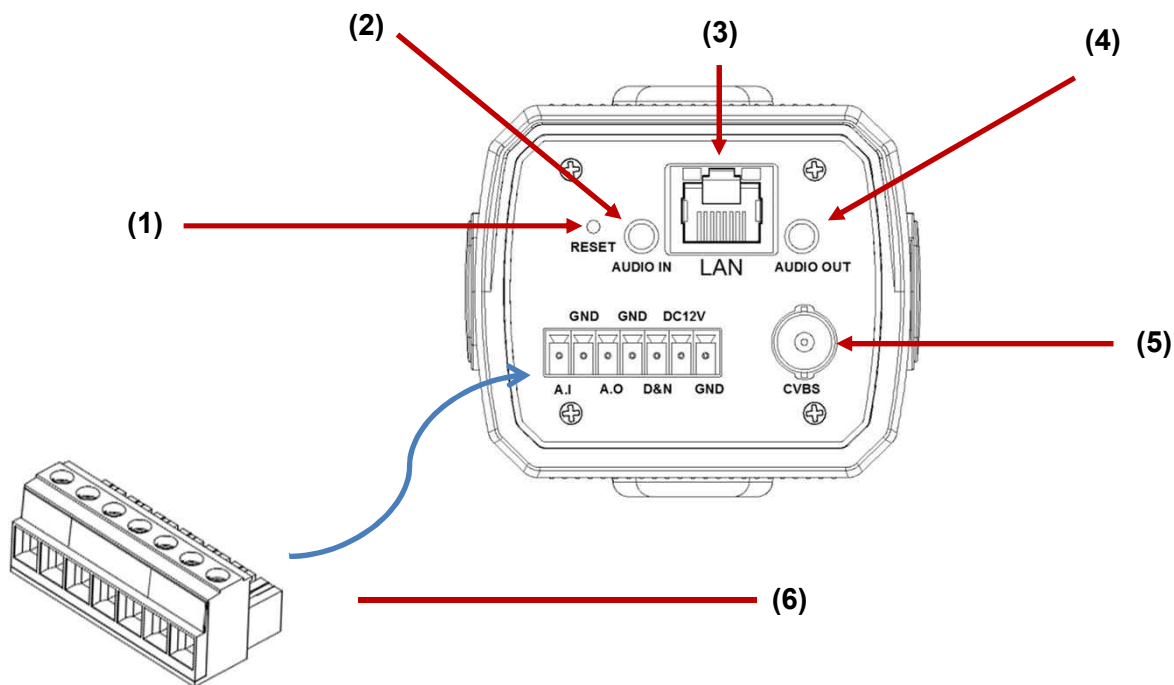


Specifications

Model	DIS-T970
Signal System	IP (Network) – Embedded Linux
Pickup Device	1/2.8"(D-6.52mm) 5.11M SONY Starvis CMOS Sensor
Scanning System	Progressive Scan (4:3 or 16:9)
Total Pixels	5.69MP [2,704(H)x2,104(V)]
Active Pixels	5.11MP [2,608(H)x1,960(V)]
Min. Illumination	0.1Lux(F2.5 – 30IRE), 0.05Lux(ICR on)
TDN	Yes (ICR Mechanism)
Video Out (RJ45)	Up to 30fps @ 2560x1920p (2560x1440, 2048x1536, 1600x1200, 1920x1080, 1280x1024, 1280x960, 640x480, 640x360, 320x240, 320x180)
Lens	Option
Lens (Mount)	C / CS type
Angle of View	N/A
OSD	Via Webpage Viewer
Camera Title	Off, On(Max. 10 Characters)
Language	English
Exposure	DC, Manual
White Balance	Auto(Indoor), Auto(Outdoor), Push, User
WDR	Off, On
Day & Night Mode	Auto, Day, Night, ICR Control
Electronic Shutter	1/(25)30~1/30,000sec
Noise Reduction	Off, On (2D-NR, 3D-NR)
DSS(Sens-up)	N/A
Mirror	Off, On(Mirror, Flip, Both)
Other Features	Motion Detection(432 Zones), Privacy Mask(16 Zones) etc
Network Protocol	TCP/IP, UDP/IP, RTP, RTSP, RTCP, NTP, HTTP DHCP, FTP, SMTP, DNS, DDNS Onvif 17.06 Compatible
At-a-time Access	Maximum 10 users
Video/Audio Codec	H.265, H.264, MJPEG / G.711 (Triplex Streaming)
Sensor In/Alarm Out	Option (1 / 1)
Audio Line In/Out	1 / 1 (Two-way Audio)
Power Source	DC12V / POE Built-in
Power Consumption	Less than 2.9Watts (240mA)
Operating Temp.	-10℃ ~ 55℃ (Humidity :0%RH ~ 90%RH)
Size (mm)	71(W) x 58(H) x 127(D)
Weight	466 g (gift-box packing)

Option

- Lens (C/CS)
 - DC Auto IRIS Manual
 - Motorized Zoom



(1) Reset Switch

In order to reset the IP camera, push the switch down and hold for over seven seconds

(2) Audio In

Line Input

(3) LAN

RJ45 Female connector

(4) Audio Out

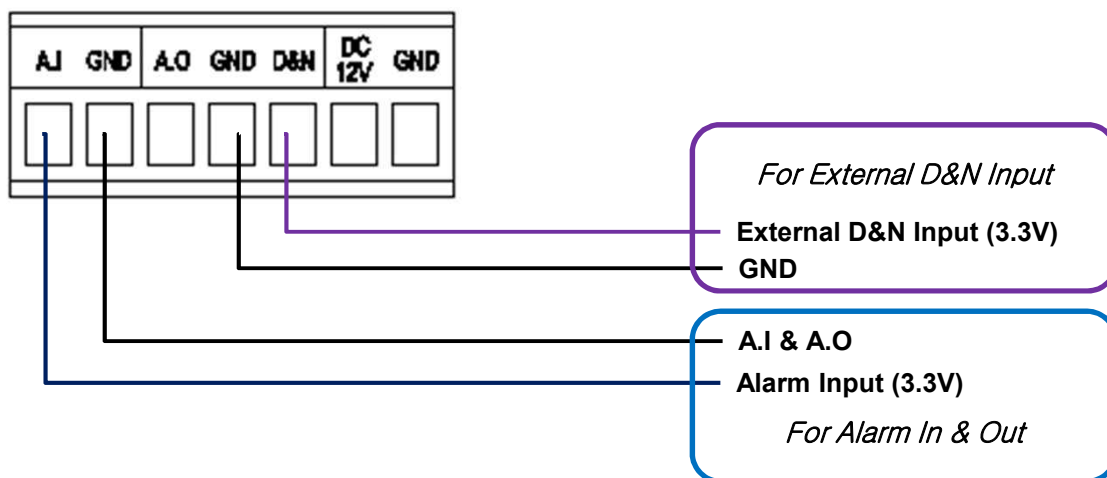
Line Output

(5) CVBS Video Out Connector

Sends CVBS video signal and connects to the video input terminal of the CVBS monitor or CVBS DVR

(6) Multi-port Terminal

Connect to the power, External D&N port and Alarm Input & Output ports properly. Camera power input is not required when POE works.



IP STANDARD BOX CAMERA

• IP camera connection

Connect LAN cable to RJ45 jack of camera

Connect the other end LAN cable to RJ45 jack of router or hub

If you are not using POE switcher to provide the power to the IP camera, connect regulated a DC12V power adaptor to the IP camera.

Wait for about 50 seconds until the camera initialization is completed

Factory Default IP address is **192.168.1.30**

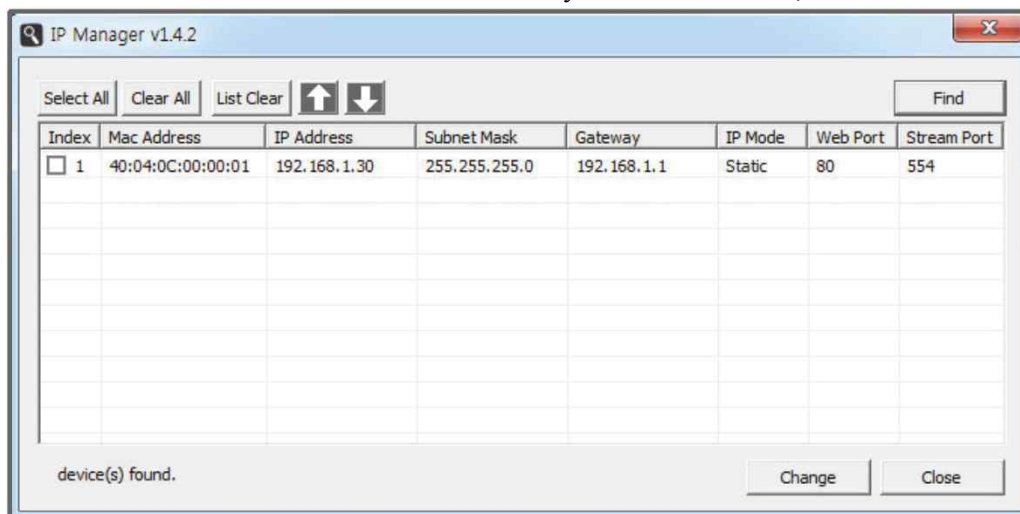
Factory Default ID & Password are **admin / admin.**

• Using IP manager

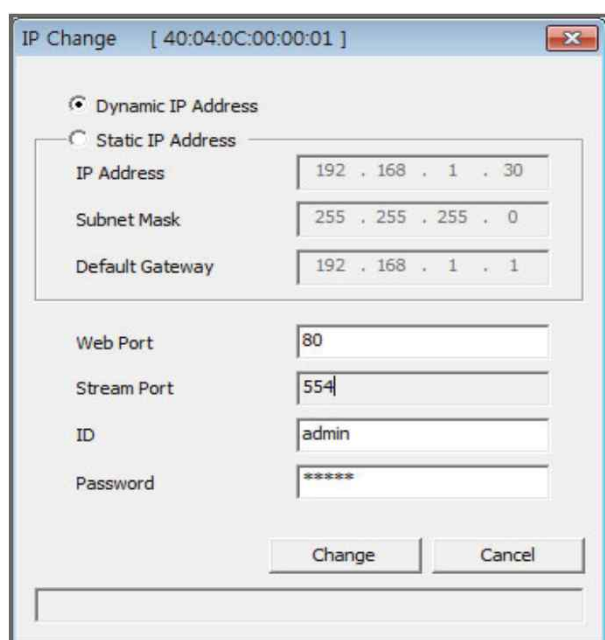
You can simply change the IP address by using 'IP Manager' provided.

Run IP manager as administrator.

click "Find" button when the IP camera is connected to your PC or network, all IP address will appear.



Choose & change the IP address of camera you want to change and click "change" Button



After click the "change" button left window will be appeared. Once you click "change" button, the camera will reboot for 10second.

After reboot the camera, the changed IP address will be applied and appeared.

• Checking Video by Web Viewer

Run web browser and Input the IP address which taken from IP manager.

• Supported O/S & Web Browser

- O/S : Windows7, 8, 10, MAC

- Browser : Internet Explorer 11 or higher, Firefox, Safari, Opera

* Monitoring videos can be operative only under IE with Active-X installation. Make sure to use an Administrator mode for installing Active-X.