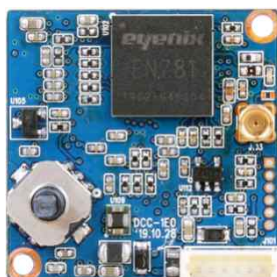
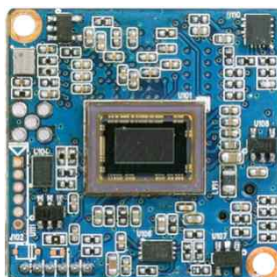


DCC-1E0

CMOS VIDEO MODULE

PARANTEK

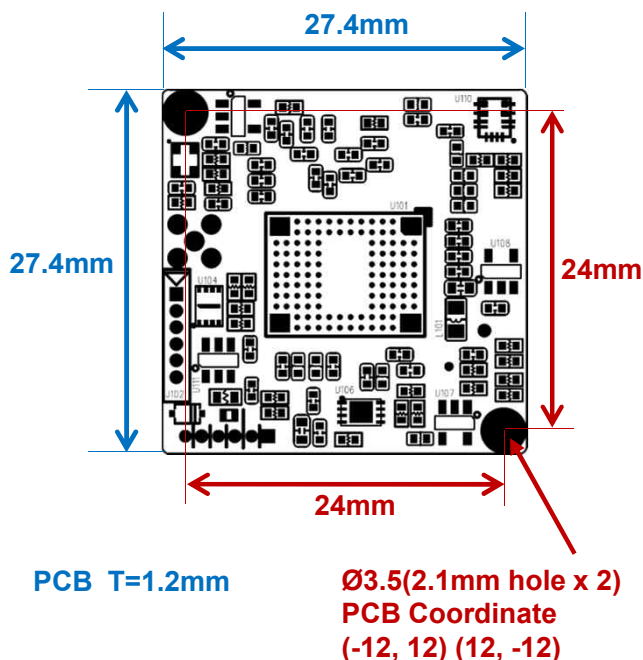


Main Features

- 1/2.8" Sony 2.9μm Pixel Progressive Starvis Color CMOS Sensor
- Approx. 2.12 Mega Pixels (Max. 1080p)
- Mountable Lens: Fixed IRIS Lenses with miniature camera housings
- WDR / 3D-DNR / DSS (Sens-up) Supported
- Built-in OSD Switch
- EX-SDI and CVBS Video Output Supported
- Pelco-D and Parantek Serial Protocol Supported (UART Control)
- AHD, TVI, CVI or CVBS Video Out can be selectable
- CMOS Video Module (27.4x27.4mm 1-board)



Dimension



Specification

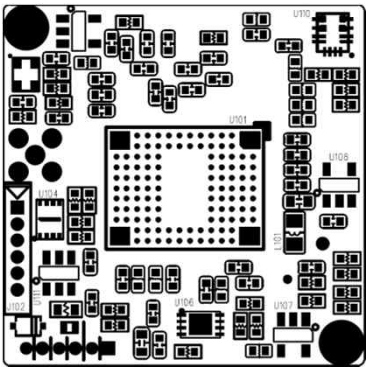
Model	DCC-1E0
Signal System	HD-SDI (Serial Data Interface)
Pickup Device	1/2.8"(D-6.46mm) 2.12M Sony CMOS Sensor
Scanning System	Progressive Scan (16:9)
Sync. System	Internal
Total Pixels	2.16MP [1,945(H)x1,109(V)]
Active Pixels	2.12MP [1,937(H)x1,097(V)]
Min. Illumination	0.01Lux(F2.5 - 30IRE), 0.0003Lux(DSS on)
Mechanical ICR	N/A
Video Out (1)	HD-SDI: 1080p25/30, 720p25/30, 720p50/60, 1080i50/60 EX-SDI: 1080p25/30/50/60, 720p25/30/50/60, 1080i50/60
Video Out (2)	AHD, TVI, CVI or Analog CVBS AHD, TVI and CVI: 1080p@25/30 / Analog CVBS: D1
Lens	Option
Lens (Mount)	Fixed IRIS Lens (Board, Pinhole, Manual VF) Via Miniature Case (M12)
OSD	Via 5-directional OSD Tact-switch and Serial Communication Port (with 6pin port)
Camera Title	Off, On(Max. 8 Characters)
Language	English, Chinese(Simplified), Chinese(Traditional), Japanese, Korean
Exposure	AE, Manual
White Balance	AUTO, AUTOext, Preset, Manual
BLC	Off, HLC, BLC, WDR
Day & Night Mode	AUTO, COLOR, B/W, EXT. D&N
Gain Control	AGC (0~10)
Electronic Shutter	Auto, Manual, Flickerless
DSS(Sens-up)	X32
Noise Reduction	3DNR (Off, Low, Middle, High)
Mirror	Off, On(Mirror, Flip, Rotation)
Other Features	Motion Detection (4 Zones), Privacy Mask (16 Zones), ACE, D-Zoom, Defog, Gamma, Shading etc.
Communication	Pelco-D and Parantek Serial Protocol Supported RS-232C TTL 3.3V (Default: 9600bps, ID1)
Microphone	N/A
Power Source	DC 5~12V
Power Consumption	Less than 1.6 Watts (130mA@DC12V)
Operating Temp.	-10℃ ~55℃ (Humidity :0%RH ~ 90%RH)
Size (mm)	27.4x27.4 1-board
Weight	4 g (without OLPF)

DCC-1E0

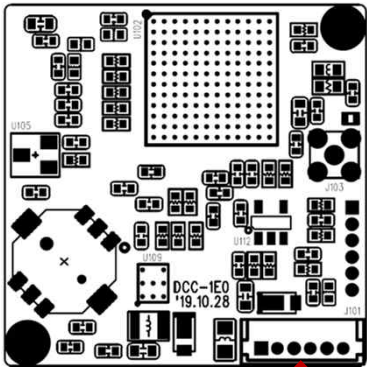
CMOS VIDEO MODULE

Pin Connections

Top



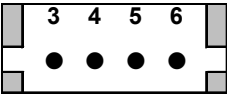
Bottom



J103

J101

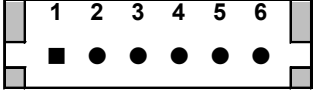
J101



No.	Pin Item	No.	Pin Item
3	Analog Video Out	5	DC 12V In
4	GND	6	GND

Wafer DIP type: 1.25mm pitch – 4 pin
Manufacturer: Molex
MFG Part Number: 53047-0410

J101



No.	Pin Item	No.	Pin Item
1	UART TX 3.3V TTL Out	4	GND
2	UART RX 3.3V TTL In	5	DC 12V In
3	Analog Video Out	6	GND

Wafer DIP type: 1.25mm pitch – 6 pin
Manufacturer: Molex
MFG Part Number: 53047-0610

J103 – MMCX for SDI Output

SETUP MENU	SUB MENU 1	SUB MENU 2	SUB MENU 3	VALUE
EXPOSURE	BRIGHTNESS			0 ~ 20 (10)
	SHUTTER	AUTO		NORMAL /DEBLUR
		MANUAL		NTSC : 1/30 ,60,120,250,500,1K,2K,4K,8K,15K,30K PAL : 1/25 ,50,100,200,400,800,1.6K,3.2K,6.4K,12.8K,25.6K
		FLICKER		
	SENS-UP			OFF / X2/ X4/ X8 / X16 / X32
	AGC			0 ~ 10 (8)
BACKLIGHT	OFF			
	HLC	LEVEL		0 ~ 20 (10)
		COLOR		BLK ,WHT,YEL,CYN,GRN,MAG,RED,BLU
	BLC	H-POS		0 ~ 20 (6)
		V-POS		0 ~ 20 (5)
		H-SIZE		0 ~ 20 (7)
		V-SIZE		0 ~ 20 (7)
	WDR	WEIGHT		LOW/ MIDDLE / HIGH
DAY&NIGHT	AUTO	D>N THRES		0(bright) ~ 20(dark) (13)
		N>D THRES		0(bright) ~ 20(dark) (7)
		DELAY		0 ~ 9sec, 10sec, 15sec (0 Sec)
		BURST		OFF/ ON
	COLOR			
	B&W	BURST		OFF/ON
WHITE BAL	AWB	AUTO		
		AUTOext		
		PRESET		Press ENTER key
		MANUAL	C-TEMP.	3000K/ 5000K / 8000K
			R-GAIN	0 ~ 20 (10)
			B-GAIN	0 ~ 20 (10)
	COLOR GAIN			0 ~ 20 (10)
DNR				OFF/ LOW/ MIDDLE / HIGH
IMAGE	SHARPNESS			0 ~ 10 (8)
	GAMMA			0.45/ 0.55 / 0.65/ 0.75
	MIRROR			OFF /ON
	FLIP			OFF /ON
	D-ZOOM			1.0X~16.0X (1.0X)
	ACE			OFF /LOW/ MIDDLE / HIGH
	DEFOG	OFF		
		ON	MODE	AUTO /MANUAL
			LEVEL	LOW/ MIDDLE / HIGH
	SHADING	OFF		
		ON	WEIGHT	0~100% (100%)

SETUP MENU	SUB MENU 1	SUB MENU 2	SUB MENU 3	VALUE
IMAGE	PRIVACY	BOX	OFF/ON	
			ZONE NUM	0~15
			ZONE DISP	OFF/ON
			H-POS	0~60
			V-POS	0~34
			H-SIZE	0~60
			V-SIZE	0~34
			Y LEVEL	0~20
			CB LEVEL	0~20
			CR LEVEL	0~20
			TRANS	0~3
		POLYGON	OFF/ON	
			ZONE NUM	0~7
			ZONE DISP	OFF/ON
			POS0-X ~POS3-X	0~120
			POS0-Y~POS3-Y	0~68
			Y LEVEL	0~20
			CB LEVEL	0~20
			CR LEVEL	0~20
			TRANS	0~3
MOTION	OFF			
	ON	DET WINDOW	WINDOW USE	0~3
			WINDOW ZONE	OFF/ON
			DET H-POS	0~60
			DET V-POS	0~34
			DET H-SIZE	0~60
			DET V-SIZE	0~34
		SENSITIVITY		0~10 (5)
SYSTEM	COMM	CAM ID		0 ~ 255 (1)
		BAUDRATE		2400,4800,9600,57600,115200
		CAM ID DISPLAY		OFF/ON
	OUTPUT	FRAME RATE	HD-SDI	1080_30p(25p), 720_30p(25p), 720_60p(50p), 1080_60i(50i)
			EX-SDI	1080_30p(25p), 720_30p(25p), 720_60p(50p), 1080_60i(50i), 1080_60p(50p)
		FREQ		50Hz(PAL) / 60Hz(NTSC)
		SDI MODE		HD-SDI / EX-SDI
		SDI OUT MODE	EX-SDI	135M(V2.0) / 135M+(V2.1) / 270M(V1.0)
			HD-SDI	Fixed [1.5G]
			1080p60(50)	Fixed [270M]
		ANALOG MODE		OFF / CVBS / HD_T / HD_C / HD_A
		CVBS OUT MODE		CUT / FULL
	LANGUAGE			ENG/ CHINESE/ CHINESE(S)/ JAPANESE/ KOR
	CAM TITLE	OFF		
		RIGHT UP		0 ~ 9, A ~ Z, blank
		LEFT DOWN		0 ~ 9, A ~ Z, blank
FACTORY DEFAULT				Reset to factory setting
EXIT				Exit SETUP menu