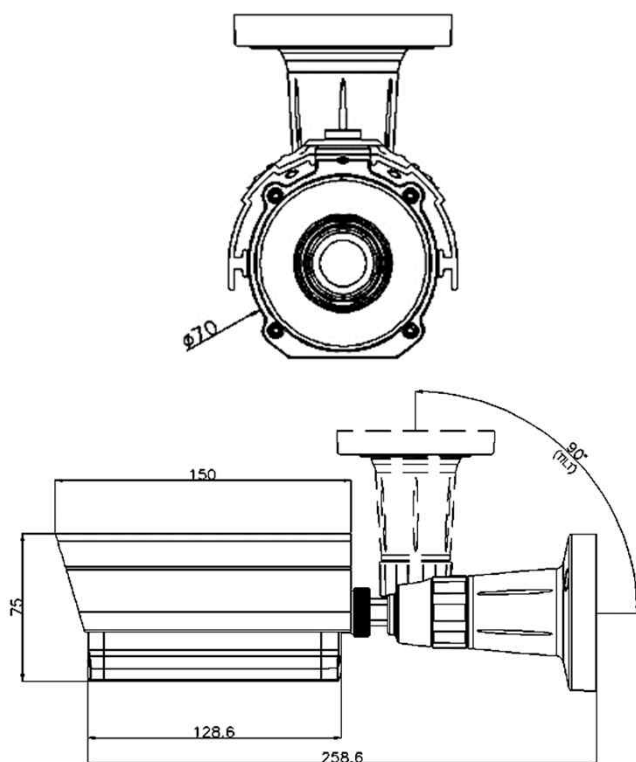


DIL-SZ910

IP LPR CAMERA



Dimension



Option

- Multi-port Cable (Sensor / Audio)

Main Features

- 1/2.8" 2.13M Sony Exmor & Starvis CMOS Sensor
- 2Mega Pixels (Max. 1080p25/30)
- f=5~50mm M/P Lens (Stepping Motorized One-push AF)
- 5pcs of SR-LED & 54pcs of 850nm IR LEDs [B/W Images]
- Max. 15M Recognition Distance (Max. 50Km/h)**
- B/W Images for both Day & Night
- POE Interface Built-in
- Onvif Ver. 17.6 Compatible with H.265, H.264 and MJPEG



Specifications

Model	DIL-SZ910
Signal System	IP (Network) – Embedded Linux
Pickup Device	1/2.8"(D-6.4mm) 2.13M SONY Exmor CMOS Sensor
Scanning System	Progressive Scan (16:9)
Total Pixels	2.16M [1945(H)x1109(V)]
Active Pixels	2.13M [1945(H)x1097(V)]
Min. Illumination	0Lux(Continuous IR on)
No. of IRED	5ea SR-LED and 25ea 5Ø (850nm)
Video Out (RJ45)	Up to 30fps @ 1920x1080p (1920x1080, 1280x1024, 1280x960, 1280x720, 1024x768, 640x480, 320x240)
Lens	DC Auto ICR Vari-focal f=5~50mm, F1.4 Stepping Motorized One-push AF
Lens (Mount)	Board type (Ø14)
Angle of View	58.7°~8.7°(D), 51.4°~7.6°(H), 29°~4.3°(V)
OSD	Via Webpage Viewer
Camera Title	Off, On(Max. 10 Characters)
Language	English
Exposure	DC
White Balance	Auto(Indoor), Auto(Outdoor), Push, User
DWDR	Off
Day & Night Mode	B/W for Day & Night
Electronic Shutter	1/500sec
Noise Reduction	Off, On (2D-NR, 3D-NR)
DSS(Sens-up)	N/A
Mirror	Off, On(Mirror, Flip, Both)
Other Features	Motion Detection(432 Zones), Privacy Mask(16 Zones) etc
Network Protocol	TCP/IP, UDP/IP, RTP, RTSP, RTCP, NTP, HTTP DHCP, FTP, SMTP, DNS, DDNS Onvif 17.06 Compatible
At-a-time Access	Maximum 10 users
Video/Audio Codec	H.265, H.264, MJPEG / G.711 (Triplex Streaming)
Sensor In/Alarm Out	Option (1 / 1)
Audio Line In/Out	Option (1 / 1, Two-way Audio)
Power Source	DC12V / POE Built-in
Power Consumption	Less than 7.8Watts (650mA)
Operating Temp.	-10℃ ~ 55℃ (Humidity :0%RH ~ 90%RH)
Size (mm)	70Ø (Bullet Diameter)
Weight	1,217 g (gift-box packing)

IP LPR CAMERA



	Function	I/O	Note	Remarks
①	RESET	N/A	Restart the camera	
②	CVBS	OUT	CVBS Service Video Out	75Ω
③	FACTORY RESET	N/A	Push the switch down and hold for over seven seconds	
④	POWER	IN	Camera power input (Not required when POE works)	DC12V
⑤	VIDEO/POE/CONTROL	IN/OUT	H.265 video output, Power over Ethernet, Control (RJ45)	

IP LPR CAMERA

• IP camera connection

Connect LAN cable to RJ45 jack of camera

Connect the other end LAN cable to RJ45 jack of router or hub

If you are not using POE switcher to provide the power to the IP camera, connect regulated a DC12V power adaptor to the IP camera.

Wait for about 50 seconds until the camera initialization is completed

Factory Default IP address is **192.168.1.30**

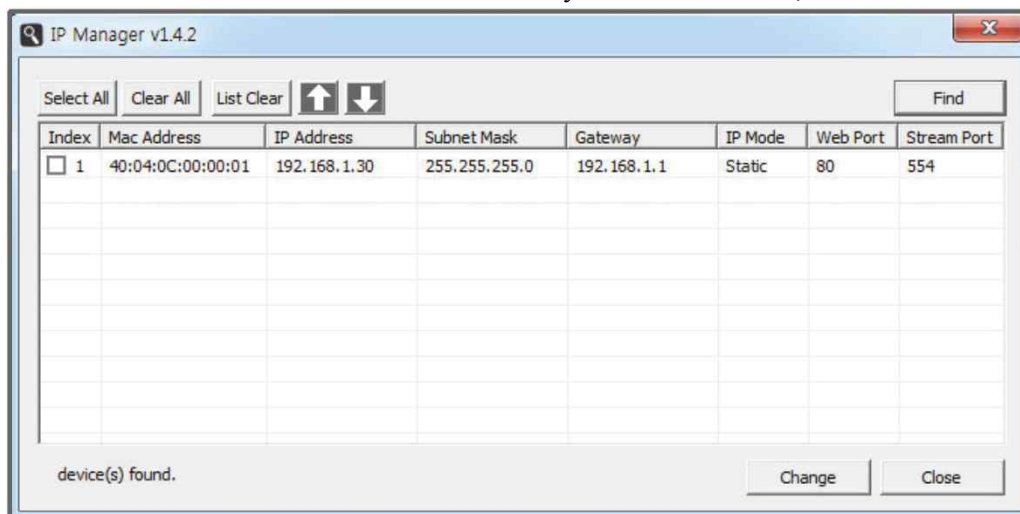
Factory Default ID & Password are **admin / admin.**

• Using IP manager

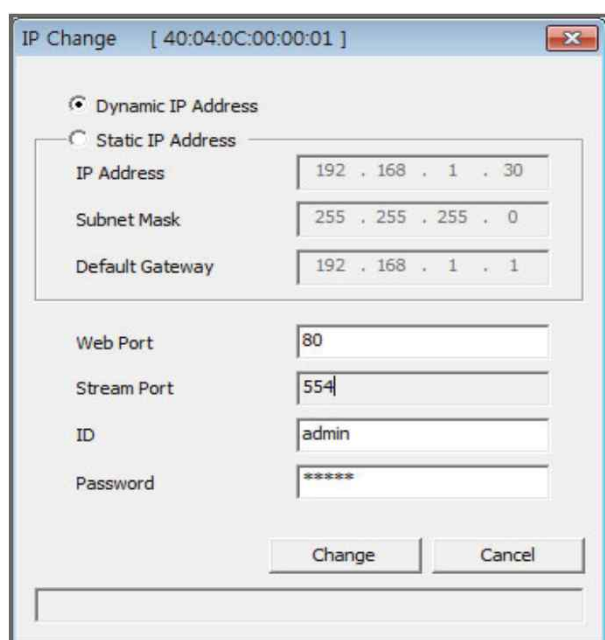
You can simply change the IP address by using 'IP Manager' provided.

Run IP manager as administrator.

click "Find" button when the IP camera is connected to your PC or network, all IP address will appear.



Choose & change the IP address of camera you want to change and click "change" Button



After click the "change" button left window will be appeared. Once you click "change" button, the camera will reboot for 10second.

After reboot the camera, the changed IP address will be applied and appeared.

• Checking Video by Web Viewer

Run web browser and Input the IP address which taken from IP manager.

• Supported O/S & Web Browser

- O/S : Windows7, 8, 10, MAC

- Browser : Internet Explorer 11 or higher, Firefox, Safari, Opera

* Monitoring videos can be operative only under IE with Active-X installation. Make sure to use an Administrator mode for installing Active-X.