

# DIP-RF918

## OUTDOOR IP CAMERA

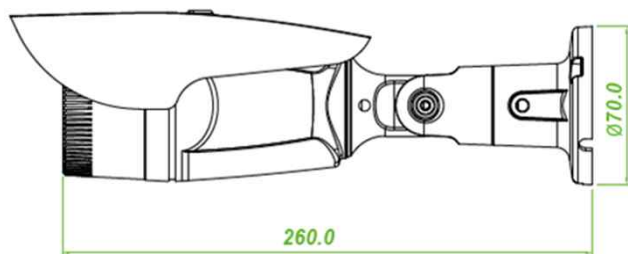
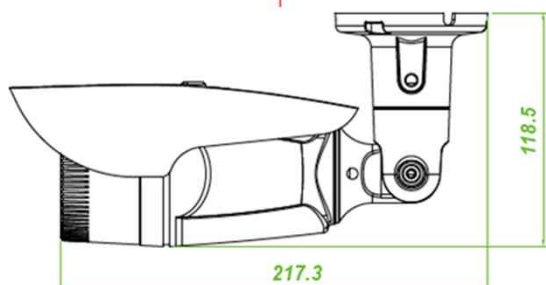
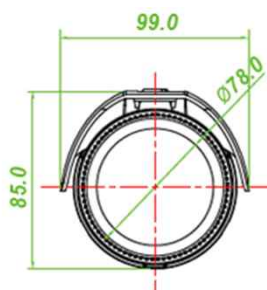


### Main Features

- 1/2.8" 2MP Sony Starvis CMOS Sensor
- 2 Mega Pixels (Max. 1080p25/30)
- f=4mm M/P Lens
- 54pcs of 850nm IR LEDs
- WDR, 3DNR Supported
- POE Interface Built-in
- Onvif Ver. 17.06 Compatible with H.265, H.264, and MJPEG
- Water-proof Housing (IP66)



### Dimension



### Option

- Lens (6, 8, 12, 16, 25mm)
- Multi-functional Video Cable

### Specifications

| Model               | DIP-RF918   |
|---------------------|---|
| Signal System       | IP (Network) – Embedded Linux   |
| Pickup Device       | <b>1/2.8"(D-6.46mm) 2.1M Sony Starvis CMOS Sensor</b>   |
| Scanning System     | Progressive Scan (16:9)   |
| Total Pixels        | 2.16MP [1,945(H)x1,109(V)]  |
| Active Pixels       | 2.12MP [1,937(H)x1,097(V)]  |
| Min. Illumination   | <b>0.06Lux(F2.5 – 30IRE), 0Lux(IR on)</b>   |
| No. of IRED         | <b>54ea (850nm)</b>   |
| Video Out (RJ45)    | <b>Up to 30fps @ 1920x1080p</b><br>(1920x1080, 1280x1024, 1280x960, 1280x720, 1024x768, 640x480, 320x240) |
| Lens                | <b>Fixed f=4mm board type, F2.5</b>   |
| Lens (Mount)        | Board type (M12)  |
| Angle of View       | 92.5°(D), 78°(H), 44.5°(V)  |
| OSD                 | Via Webpage Viewer  |
| Camera Title        | Off, On(Max. 10 Characters)   |
| Language            | English   |
| Exposure            | AE, Manual  |
| White Balance       | Auto(Indoor), Auto(Outdoor), Push, User   |
| WDR                 | Off, On   |
| Day & Night Mode    | Auto, Day, Night, ICR Control   |
| Electronic Shutter  | 1/25(30)~1/30,000sec  |
| Noise Reduction     | 2DNR, 3DNR  |
| DSS(Sens-up)        | N/A   |
| Mirror              | Off, On(Mirror, Flip, Both)   |
| Other Features      | Motion Detection(432 Zones), Privacy Mask(16 Zones), Defog, Etc.  |
| Network Protocol    | TCP/IP, UDP/IP, RTP, RTSP, RTCP, NTP, HTTP<br>DHCP, FTP, SMTP, DNS, DDNS<br>Onvif 2.4 Compatible          |
| At-a-time Access    | Maximum 10 users  |
| Video/Audio Codec   | H.265, H.264, MJPEG / G.711 (Triplex Streaming)   |
| Sensor In/Alarm Out | Option (1 / 1)  |
| Audio Line In/Out   | Option (1 / 1, Two-way Audio)   |
| Power Source        | <b>DC12V / POE Built-in</b>   |
| Power Consumption   | Less than 8Watts (660mA)  |
| Operating Temp.     | -10℃ ~ 55℃ (Humidity :0%RH ~ 90%RH)   |
| Size (mm)           | 78Ø (Bullet Diameter)   |
| Weight              | 824 g (gift-box packing)  |

## OUTDOOR IP CAMERA

### • IP camera connection

Connect LAN cable to RJ45 jack of camera

Connect the other end LAN cable to RJ45 jack of router or hub

If you are not using POE switcher to provide the power to the IP camera, connect regulated a DC12V power adaptor to the IP camera.

Wait for about 50 seconds until the camera initialization is completed

Factory Default IP address is **192.168.1.30**

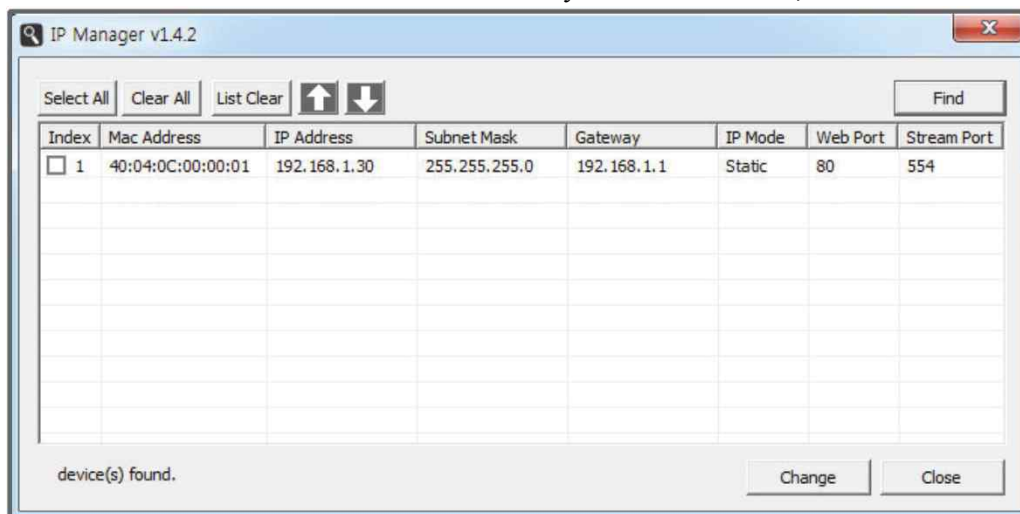
Factory Default ID & Password are **admin / admin.**

### • Using IP manager

You can simply change the IP address by using 'IP Manager' provided.

Run IP manager as administrator.

click "Find" button when the IP camera is connected to your PC or network, all IP address will appear.



Choose & change the IP address of camera you want to change and click "change" Button



After click the "change" button left window will be appeared. Once you click "change" button, the camera will reboot for 10second.

After reboot the camera, the changed IP address will be applied and appeared.

### • Checking Video by Web Viewer

Run web browser and Input the IP address which taken from IP manager.

### • Supported O/S & Web Browser

- O/S : Windows7, 8, 10, MAC

- Browser : Internet Explorer 11 or higher, Firefox, Safari, Opera

\* Monitoring videos can be operative only under IE with Active-X installation.