

# DIP-RF1D3

## OUTDOOR IP CAMERA

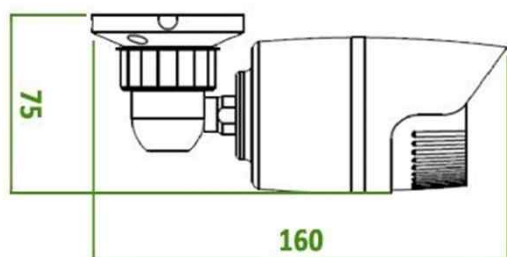
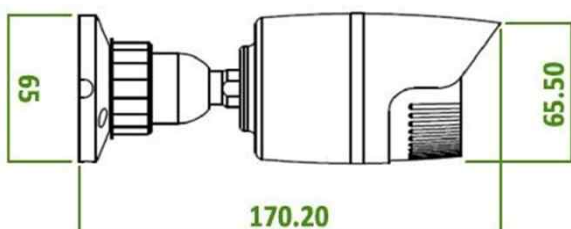


### Main Features

- 1/2.8" 2MP Sony Starvis CMOS Sensor
- 2 Mega Pixels (Max. 1080p25/30)
- f=4mm M/P Lens
- 24pcs of 850nm IR LEDs
- WDR, 3DNR Supported
- POE Interface Built-in
- Onvif Ver. 17.06 Compatible with H.265, H.264, and MJPEG
- Water-proof Housing (IP66)



### Dimension



### Specifications

Model	DIP-RF1D3
Signal System	IP (Network) – Embedded Linux
Pickup Device	<b>1/2.8"(D-6.46mm) 2.1M Sony Starvis CMOS Sensor</b>
Scanning System	Progressive Scan (16:9)
Total Pixels	2.16MP [1,945(H)x1,109(V)]
Active Pixels	2.12MP [1,937(H)x1,097(V)]
Min. Illumination	0.1Lux, 0.0Lux (IR on)
No. of IRED	<b>24ea (850nm)</b>
Video Out (RJ45)	<b>Up to 30fps @ 1920x1080p</b> (1920x1080, 1280x1024, 1280x960, 1280x720, 1024x768, 640x480, 320x240)
Lens	<b>Fixed f=4mm board type, F2.5</b>
Lens (Mount)	Board type (M12)
Angle of View	92.5°(D), 78°(H), 44.5°(V)
OSD	Via Webpage Viewer
Camera Title	Off, On(Max. 10 Characters)
Language	English
Exposure	AE, Manual
White Balance	Auto(Indoor), Auto(Outdoor), Push, User
WDR	Off, On
Day & Night Mode	Auto, Day, Night, ICR Control
Electronic Shutter	1/25(30)~1/30,000sec
Noise Reduction	2DNR, 3DNR
DSS(Sens-up)	N/A
Mirror	Off, On(Mirror, Flip, Both)
Other Features	Motion Detection(432 Zones), Privacy Mask(16 Zones), Defog, Etc.
Network Protocol	TCP/IP, UDP/IP, RTP, RTSP, RTCP, NTP, HTTP DHCP, FTP, SMTP, DNS, DDNS Onvif 2.4 Compatible
At-a-time Access	Maximum 10 users
Video/Audio Codec	H.265, H.264, MJPEG (Triplex Streaming)
Sensor In/Alarm Out	N/A
Audio Line In/Out	N/A
Power Source	<b>DC12V / POE Built-in</b>
Power Consumption	Less than 4.5Watts (350mA)
Operating Temp.	-10℃ ~ 55℃ (Humidity :0%RH ~ 90%RH)
Size (mm)	65Ø(Bullet Diameter)
Weight	393 g (gift-box packing)

### Option

- Wall-mount Bracket

## OUTDOOR IP CAMERA

### • IP camera connection

Connect LAN cable to RJ45 jack of camera

Connect the other end LAN cable to RJ45 jack of router or hub

If you are not using POE switcher to provide the power to the IP camera, connect regulated a DC12V power adaptor to the IP camera.

Wait for about 50 seconds until the camera initialization is completed

Factory Default IP address is **192.168.1.30**

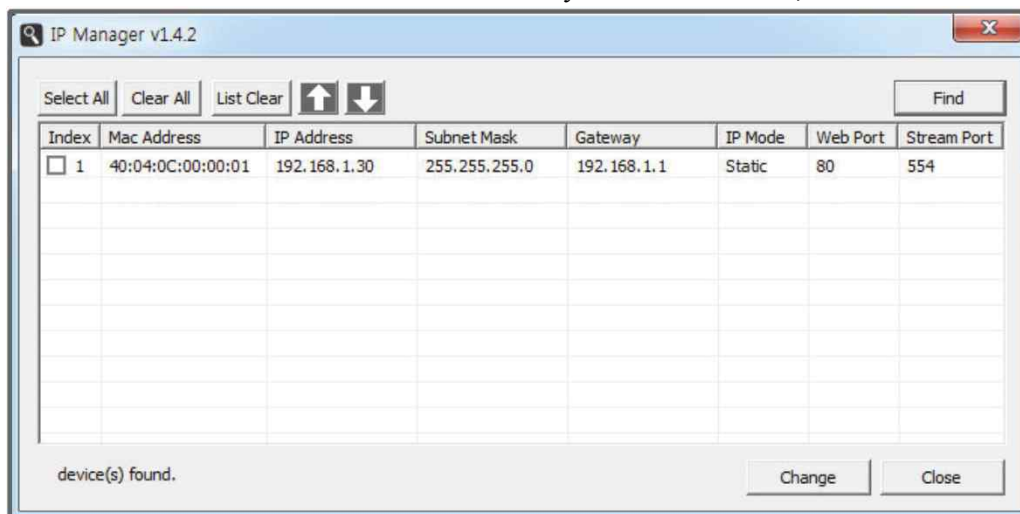
Factory Default ID & Password are **admin / admin.**

### • Using IP manager

You can simply change the IP address by using 'IP Manager' provided.

Run IP manager as administrator.

click "Find" button when the IP camera is connected to your PC or network, all IP address will appear.



Choose & change the IP address of camera you want to change and click "change" Button



After click the "change" button left window will be appeared. Once you click "change" button, the camera will reboot for 10second.

After reboot the camera, the changed IP address will be applied and appeared.

### • Checking Video by Web Viewer

Run web browser and Input the IP address which taken from IP manager.

### • Supported O/S & Web Browser

- O/S : Windows7, 8, 10, MAC

- Browser : Internet Explorer 11 or higher, Firefox, Safari, Opera

\* Monitoring videos can be operative only under IE with Active-X installation.