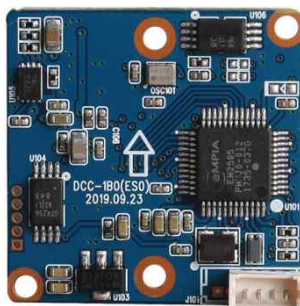
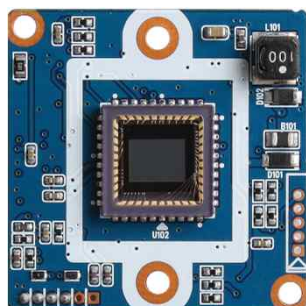


DCC-1B0

CMOS USB VIDEO MODULE

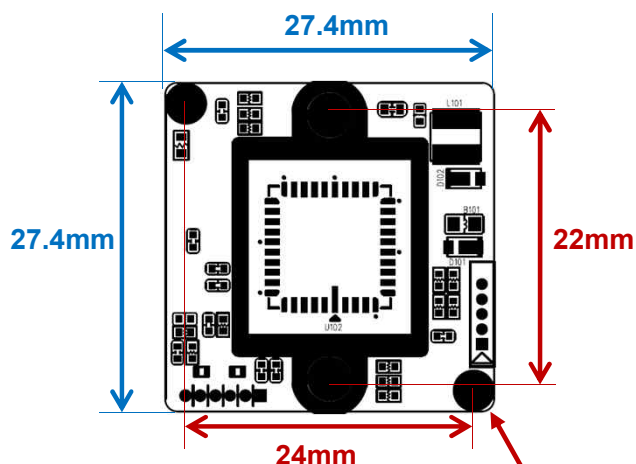


Main Features

- 1/3" 6.5 x 7.4μm Pixel Progressive WDR CMOS Sensor
- 0.35 Mega Pixels – Maximum 480p (VGA)
- Mountable Lens: Fixed, Pinhole, Manual VF Lens
- Excellent Quality of YUV
- USB2.0 Compliant
- Best for ATM, Kiosk, POS, Face Recognition, Gaming Applications
- Snap-shot Feature Supported (1B0S series)
- CMOS USB2.0 Video Module (27.4x27.4mm 1-board)



Dimension



Ø3.5(2.1mm hole x 2)
PCB Coordinate (-12, 12) (12, -12)

Option

- OLPF
- Lens Holder
- Lens
- Snap-shot (DCC-1B0S)

Specification

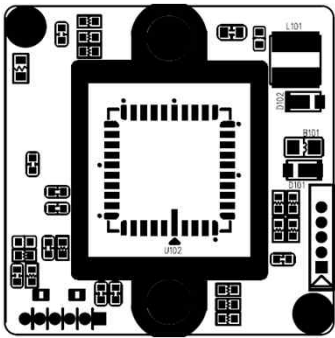
Model	DCC-1B0
Signal System	YUV
Pickup Device	1/3"(D-5.88mm) 0.35M WDR CMOS Sensor
Scanning System	Progressive Scan (4:3)
Sync. System	Internal
Total Pixels	0.40M [776(H)x516(V)]
Active Pixels	0.35M [720(H)x480(V)]
Min. Illumination	0.4Lux (F2.5-30IRE)
Mechanical ICR	N/A
Video Resolution	VGA (640x480)
Capturing Speed	Max. 25/30fps @ VGA(640x480) in YUV (50/60Hz)
Lens	Option
Lens (Mount)	Board Mount(M12)
OSD	N/A
Exposure	Auto
White Balance	Auto
WDR	Yes
Day & Night Mode	Color (Factory Default)
Gain Control	Auto
Electronic Shutter	Auto
Mirror	Off (Factory Default)
Supported O/S	UVC Compatible O/S <ul style="list-style-type: none">- Windows (CE/XP/Vista/Win7/Win8)- Linux(2.6.26 or later), Mac, Android etc.
No. of Camera ID	Up to 2 per PC
Power Source	DC5V via USB(90mA)
Operating Temp.	-10℃ ~ 55℃ (Humidity :0%RH ~ 90%RH)
Size (mm)	27.4(W) x 27.4(D) – 1 Board
Weight	3.5 g (Without OLPF & Lens Holder)

DCC-1B0

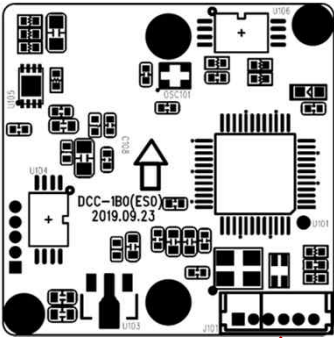
CMOS USB VIDEO MODULE

Pin Connections

Board Front

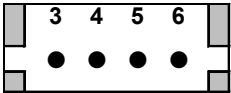


Board Rear



J101

J101

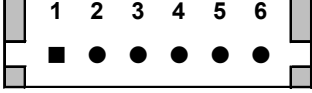


No.	Pin Item	No.	Pin Item
3	DC 5V	5	DP
4	DM	6	GND

Wafer DIP type: 1.25mm pitch – 4 pin
Manufacturer: Molex
MFG Part Number: 53047-0410

<DCC-1B0>

J101



No.	Pin Item	No.	Pin Item
1	SNAP SHOT(NH, Act.-L)	4	DM
2	GND	5	DP
3	DC 5V	6	GND

Wafer DIP type: 1.25mm pitch – 6 pin
Manufacturer: Yeonho
MFG Part Number: 12512WS-06B

<DCC-1B0S>