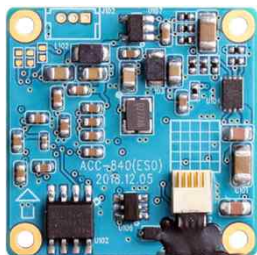
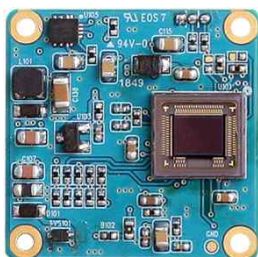


# ACC-840

## CMOS VIDEO MODULE

PARANTEK

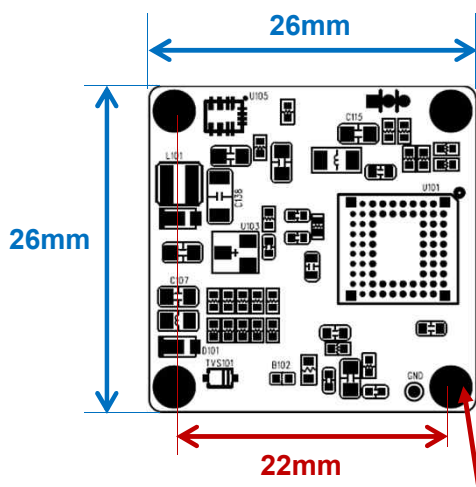


### Main Features

- 1/3.2" Sony 3.5μm Pixel Starvis Color CMOS Sensor
- Approx. 1.23 Mega Pixels
- Mountable Lens: Fixed, Pinhole, Manual VF Lens (lens holder built-in housing required)
- WDR Supported
- CVBS NTSC Camera
- Running Voltage : DC15V
- CMOS Video Module (26x26mm 1-board)



### Dimension



Ø3.4(0.18mm hole x 4)  
PCB Coordinate (-11, 11) (11, -11)  
(-11, -11) (11, 11)

PCB T=1.2mm

### Option

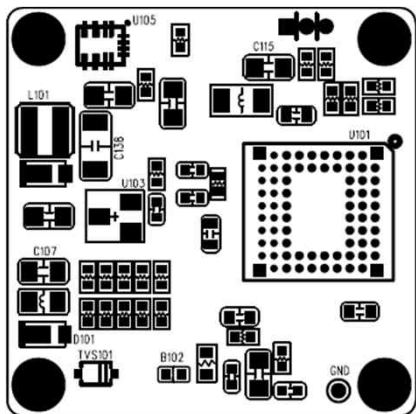
### Specification

Model	ACC-840
Signal System	NTSC
Pickup Device	1/3.2"(D-5.678mm) 1.23M Sony CMOS Sensor
Scanning System	Interlaced Scan (4:3)
Sync. System	Internal
Total Pixels	1.27MP [1,297(H)x977(V)]
Active Pixels	1.23MP [1,280(H)x960(V)]
Scanning Frequency	59.94Hz(VD)
Min. Illumination	0.005Lux(F1.2 - 30IRE)
Mechanical ICR	N/A
Video Out	Analog CVBS (D1 - NTSC)
Lens	Option
Lens (Mount)	Fixed IRIS Lens Lens Holder is not available
OSD	Via GPIO OSD Port
Camera Title	Off, On(Max. 52 Characters)
Language	English, German, French, Russian, Portuguese, Spanish
Exposure	Auto (ELC), Manual
White Balance	ATW / Push / User1 / User2 / Manual / PushLock
BLC	Off, HLC, BLC ATR & WDR mode Supported
Day & Night Mode	AUTO, Manual
Gain Control	AGC
Electronic Shutter	1/60~1/100,000sec
DSS(Sens-up)	N/A
Noise Reduction	2DNR (Off, Y/C, Y, C)
Mirror	Off, On(Mirror, Flip, Rotation)
Other Features	Privacy Mask (16 Zones), Color Gain, Defog etc.
Communication	N/A
Microphone	N/A
Power Source	DC 15V(±10%)
Power Consumption	Less than 0.65 Watts (42mA@DC15V)
Operating Temp.	-30℃ ~ 85℃ (Humidity :0%RH ~ 90%RH)
Size (mm)	26x26 2-boards
Weight	3.5 g

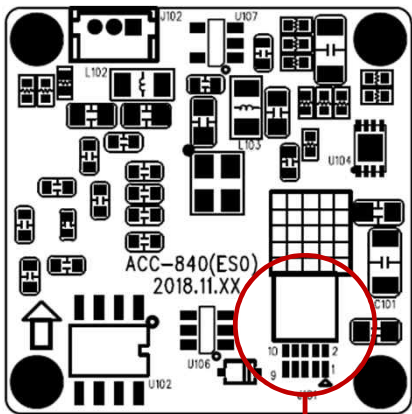
# ACC-840

## CMOS VIDEO MODULE

### Pin Connections



Front

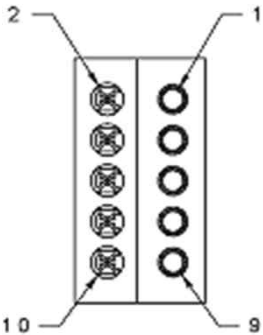


Rear

J101

### J101 – I/O Interface

No.	Pin Item	I/O	Comment
1	<b>GND</b>		
2	<b>KEY_UP</b>	IN	
3	<b>GND</b>		
4	<b>KEY_RIGHT</b>	IN	
5	<b>UN_15V</b>	IN	
6	<b>KEY_ENTER</b>	IN	
7	<b>GND</b>		
8	<b>KEY_LEFT</b>	IN	
9	<b>CVBS_OUT</b>	OUT	
10	<b>KEY_DOWN</b>	IN	



Wafer SMD type: **0.64mm pitch – 10 pin**  
 Manufacturer: **Omnetics Connector Corporation**  
 MFG Part Number: **PZN-10-AA (A79618-001)**

SETUP MENU	SUB MENU 1	SUB MENU 2	SUB MENU 3	VALUE
LENS	DC	MODE		AUTO, OPEN, CLOSE
		SPEED		0 ~ 255
	MANUAL			
SHUTTER / AGC	AUTO	HIGH LUMINANCE	MODE	SHUT + DC IRIS, DC IRIS ( <i>LENS - DC Mode</i> )
			AE LEVEL	0 ~ 255
		LOW LUMINANCE	AGC	ON, OFF
			AE LEVEL	X0.25, X0.50, X0.75, X1.00
	MANUAL	SHUTTER		1/60, 1/100, 1/120, 1/125, 1/250, 1/500, 1/1,000, 1/2,000, 1/4,000, 1/8,000, 1/10,000, 1/20,000, 1/50,000, 1/100,000
		AGC		MIN, 6, 12, 18, 24, 30, 36, 42, 48, Max
WHITE BAL	ATW	SPEED		0 ~ 255
		DELAY CNT		0 ~ 255
		ATW FRAME	INDOOR	X0.50, X1.00, X1.50, X2.00
			OUTDOOR	X0.50, X1.00, X1.50, X2.00
		ENVIRONMENT		AUTO1, AUTO2, INDOOR, OUTDOOR
	PUSH			
	USER 1	B-GAIN		0 ~ 255
		R-GAIN		0 ~ 255
	USER 2	B-GAIN		0 ~ 255
		R-GAIN		0 ~ 255
	MANUAL	POSITION		0 ~ 63
	PUSH LOCK			
BACKLIGHT				OFF, BLC, HLC * BLC is not selectable when WDR mode is on
PICT ADJUST	FLIP			OFF, H-FLIP, V-FLIP, HV-FLIP
	BRIGHTNESS			0 ~ 255
	CONTRAST			0 ~ 255
	SHARPNESS			0 ~ 255
	HUE			0 ~ 180
	COLOR GAIN			0 ~ 255

SETUP MENU	SUB MENU 1	SUB MENU 2	SUB MENU 3	VALUE
DEFOG	OFF			
	AUTO	LEVEL		LOW, MID, HIGH
WDR / ATR	OFF			
	ATR	BRIGHTNESS		LOW, MID, HIGH
		CONTRAST		LOW, MID, HIGH
	WDR	BRIGHTNESS		LOW, MID, HIGH
		CONTRAST		LOW, MID, HIGH
DAY / NIGHT	AUTO	DAY -> NIGHT		0 ~ 255
		NIGHT -> DAY		0 ~ 255
		DELAY CNT		0 ~ 255
		BURST		OFF, ON
	MANUAL	DAY / NIGHT		COLOR, B/W
		BURST		OFF, ON
DNR	MODE			OFF, Y/C, Y, C
	Y LEVEL			1 ~ 7
	C LEVEL			1 ~ 7
PRIVACY	OFF			
	ON	AREA SEL		1 ~ 16
		TOP		0 ~ 480
		BOTTOM		0 ~ 480
		LEFT		0 ~ 1184
		RIGHT		0 ~ 1184
		COLOR		1 ~ 8
		TRANSP		0.00, 0.50, 0.75, 1.00
		MOSAIC		OFF, ON
CAMERA ID	OFF			
	ON			<i>* Upto 52 Characters available</i>
LANGUAGE				ENGLISH, GERMAN, FRENCH, RUSSIAN, SPANISH, PORTUGUESE
CAMERA RESET	YES			
EXIT	SAVE ALL			
	NOT SAVE			
	CANCEL			