

DIL-LZ701

LPR IP CAMERA

PARANTEK



Main Features

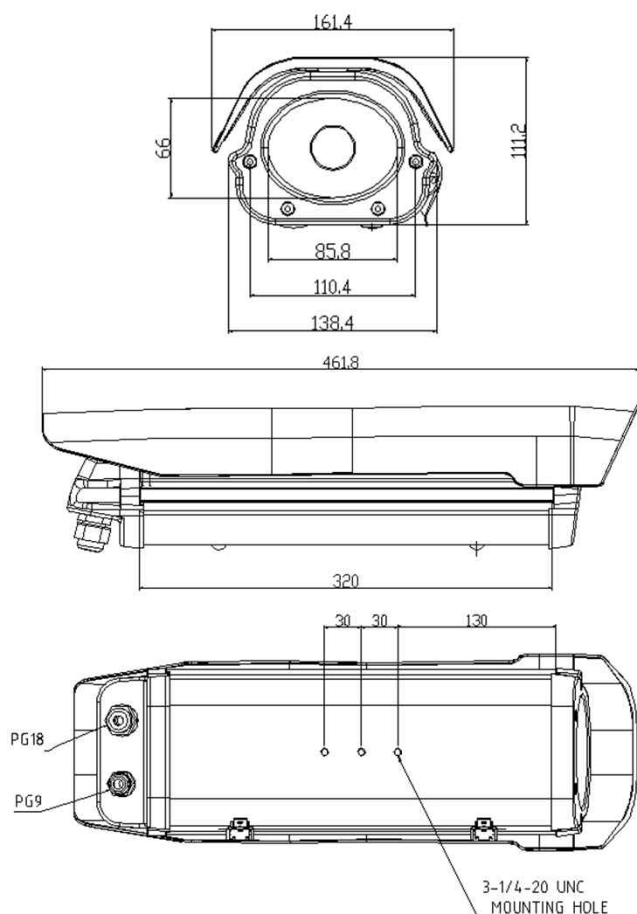
- 1/2.8" 2.13M Sony Exmor CMOS Sensor
- 2Mega Pixels (Max. 1080p25/30)
- f=5~50mm M/P Lens (ICR, Stepping Motorized AF)
- 18pcs of Power LEDs (Max. 10M LPR Distance)
- Onvif Ver. 2.4 Compatible with H.264 and MJPEG
- Weather-proof Housing(IP65)



Specifications

Model	DIL-LZ701
Signal System	IP (Network) – Embedded Linux
Pickup Device	1/2.8"(D-6.4mm) 2.13M SONY Exmor CMOS Sensor
Scanning System	Progressive Scan (16:9)
Total Pixels	2.16M [1945(H)x1109(V)]
Active Pixels	2.13M [1945(H)x1097(V)]
Min. Illumination	0.04Lux(F2.5 – 30IRE), 0Lux(IR on)
No. of IRED	18ea of Power LED (740nm)
Video Out (RJ45)	Up to 30fps @ 1920x1080p (1920x1080, 1280x1024, 1280x960, 1280x720, 1024x768, 640x480, 320x240)
Lens	DC Auto ICR Vari-focal f=5~50mm, F1.4 Stepping Motorized AF
Lens (Mount)	Board type (Ø14)
Angle of View	58.7°~8.7°(D), 51.4°~7.6°(H), 29°~4.3°(V)
OSD	Via Webpage Viewer
Camera Title	Off, On(Max. 10 Characters)
Language	English, Korean
Exposure	DC
White Balance	Auto, Push, Indoor, Outdoor, Fluorescent, User
BLC	Off
DWDR	Off, On(1 ~ 3 Steps)
Day & Night Mode	Color
Electronic Shutter	1/480sec
Noise Reduction	Off, On (2D-NR, 3D-NR)
DSS(Sens-up)	N/A
Mirror	Off, On(Mirror, Flip, Both)
Other Features	Motion Detection (432 Zones), Privacy Mask (16 Zones), Defog, Lens Shading Compensation etc.
Network Protocol	TCP/IP, UDP/IP, RTP, RTSP, RTCP, NTP, HTTP, DHCP, FTP, SMTP, DNS, DDNS, Onvif 2.4.2
At-a-time Access	Maximum 10 users
Video/Audio Codec	H.264, MJPEG / G.711 (Triplex Streaming) Streaming RTP/RTSP supported
Sensor In/Alarm Out	Terminal Block (1 / 1)
Audio Line In/Out	Option (1 / 1, Two-way Audio)
Power Source	DC12V (POE Not Available)
Power Consumption	Less than 36Watts (3A)
Operating Temp.	-10℃ ~ 55℃ (Humidity :0%RH ~ 90%RH)
Size (mm)	161.4(W) x 111.2(H) x 461.8(D)
Weight	3.5 Kg (gift-box packing)

Dimension



Option

- Wall-Mount Bracket

- **IP camera connection**

- Factory Default ID & Password are **admin / admin**.

click “Find” button when the IP camera is connected to your PC or network, all IP address will appear.

