

# DIR-WF6117-6

## OUTDOOR IP CAMERA

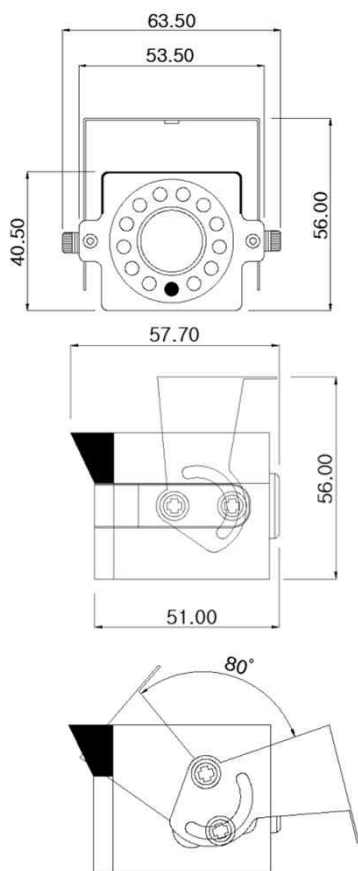


### Main Features

- 1/2.9" 2.19M Sony Exmor CMOS Sensor
- 2 Mega Pixels (Max. 1080p25/30)
- f=6mm M/P Lens
- 12pcs of Yellow Color LEDs
- Yellow LED On with Color Mode
- Onvif Ver. 2.4 Compatible with H.264, MPEG4 and MJPEG
- Water-proof Housing (IP66)



### Dimension



### Option

- Wall-mount Bracket

### Specifications

Model	DIR-WF6117-6
Signal System	IP (Network) – Embedded Linux
Pickup Device	<b>1/2.9"(D-6.23mm) 2.1M Sony Exmor CMOS Sensor</b>
Scanning System	Progressive Scan (16:9)
Total Pixels	2.24MP [2000(H)x1121(V)]
Active Pixels	2.12MP [1936(H)x1097(V)]
Min. Illumination	0Lux(IR on)
No. of IRED	<b>12pcs (630nm Yellow Color LED)</b>
Video Out (RJ45)	<b>Up to 30fps @ 1920x1080p</b> (1920x1080, 1280x1024, 1280x960, 1280x720, 1024x768, 640x480, 320x240)
Lens	<b>f=6mm, F2.5</b>
Lens (Mount)	Board type (M12)
Angle of View	<b>55.6°(D), 47°(H), 25.6°(V)</b>
OSD	Via Webpage Viewer
Camera Title	Off, On(Max. 10 Characters)
Language	English, Korean
Exposure	AE, Manual
White Balance	Auto, Indoor, Outdoor, Fluorescent
DWDR	Off, On(1 ~ 5 Steps)
Day & Night Mode	Auto, Day, Night, EXT.
Electronic Shutter	1/25(30)~1/15,000sec
Noise Reduction	Off, On (1~63 Setps)
DSS(Sens-up)	N/A
Mirror	Off, On(Mirror, Flip, Both)
Other Features	Motion Detection(48 Zones), Privacy Mask(6 Zones) etc.
Network Protocol	TCP/IP, UDP/IP, RTP, RTSP, RTCP, NTP, HTTP DHCP, FTP, SMTP, DNS, DDNS Onvif 2.4 Compatible
At-a-time Access	Maximum 10 users
Video/Audio Codec	H.264, MPEG4, MJPEG / G.711 (Triplex Streaming)
Sensor In/Alarm Out	N/A
Audio Line In/Out	N/A
Power Source	<b>DC12V / POE (Cable POE: 260mm±15mm)</b>
Power Consumption	Less than 3.6Watts (300mA)
Operating Temp.	-10℃ ~ 55℃ (Humidity :0%RH ~ 90%RH)
Size (mm)	63.5(W) x 40.5(H) x 57.7(D) (Without Bracket)
Weight	240g (gift-box packing)

## OUTDOOR IP CAMERA

### • IP camera connection

Connect LAN cable to RJ45 jack of camera

Connect the other end LAN cable to RJ45 jack of router or hub

If you are not using POE switcher to provide the power to the IP camera, connect regulated a DC12V power adaptor to the IP camera.

Wait for about 50 seconds until the camera initialization is completed

Factory Default IP address is **192.168.1.30**

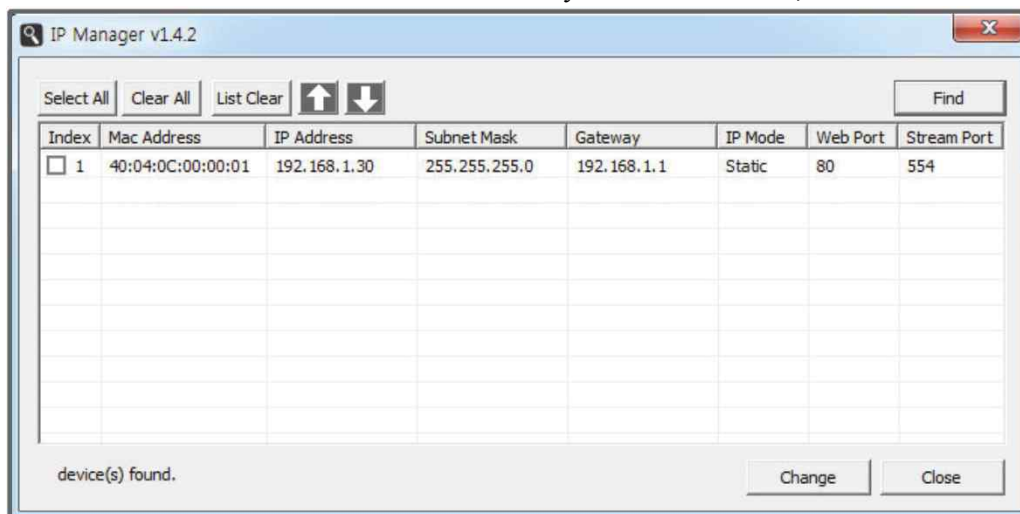
Factory Default ID & Password are **admin / admin.**

### • Using IP manager

You can simply change the IP address by using 'IP Manager' provided.

Run IP manager as administrator.

click "Find" button when the IP camera is connected to your PC or network, all IP address will appear.



Choose & change the IP address of camera you want to change and click "change" Button



After click the "change" button left window will be appeared. Once you click "change" button, the camera will reboot for 10second.

After reboot the camera, the changed IP address will be applied and appeared.

### • Checking Video by Web Viewer

Run web browser and Input the IP address which taken from IP manager.

### • Supported O/S & Web Browser

- O/S : Windows7, 8, 10, MAC

- Browser : Internet Explorer 11 or higher, Firefox, Safari, Opera

\* Monitoring videos can be operative only under IE with Active-X installation.