

DIP-RF6113

OUTDOOR IR-BULLET IP CAMERA

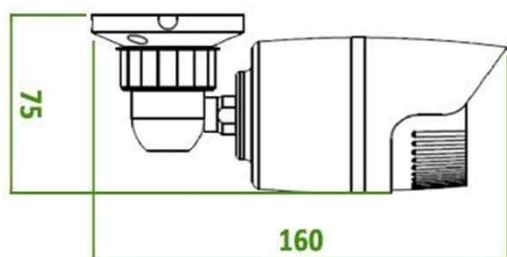
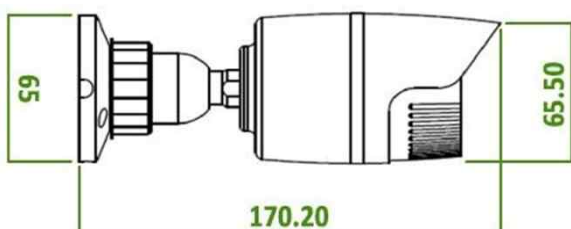


Main Features

- 1/2.9" 2.8μm Sony Exmor Progressive CMOS Sensor
- 2Mega Pixels (Max. 1080p25/30)
- f=4mm M/P Lens (ICR)
- 24pcs of 850nm IR LEDs
- POE Interface Built-in
- Onvif Ver. 2.4 Compatible with H.264, MPEG4 and MJPEG
- Water-proof Housing (IP66)



Dimension



Specifications

Model	DIP-RF6113
Signal System	IP (Network) – Embedded Linux
Pickup Device	1/2.9"(D-6.23mm) 2.1M SONY Exmor CMOS Sensor
Scanning System	Progressive Scan (16:9)
Total Pixels	2.24M [2000(H)x1121(V)]
Active Pixels	2.12M [1936(H)x1097(V)]
Min. Illumination	0.2Lux, 0Lux(IR on)
No. of IRED	24ea (850nm)
Video Out (RJ45)	Up to 30fps @ 1920x1080p (1920x1080, 1280x1024, 1280x960, 1280x720, 1024x768, 640x480, 320x240)
Lens	Fixed f=4mm board type, F2.5
Lens (Mount)	Board type (M12)
Angle of View	97.5°(D), 85°(H), 47.5°(V)
OSD	Via Webpage Viewer
Camera Title	Off, On(Max. 10 Characters)
Language	English, Korean
Exposure	AE, Manual
White Balance	Auto, Indoor, Outdoor, Fluorescent
DWDR	Off, On(1 ~ 5 Steps)
Day & Night Mode	Auto, Day, Night, EXT.
Electronic Shutter	1/25(30)~1/15,000sec
Noise Reduction	Off, On (1~63 Setps)
DSS(Sens-up)	N/A
Mirror	Off, On(Mirror, Flip, Both)
Other Features	Motion Detection(48 Zones), Privacy Mask(6 Zones) etc.
Network Protocol	TCP/IP, UDP/IP, RTP, RTSP, RTCP, NTP, HTTP DHCP, FTP, SMTP, DNS, DDNS Onvif 2.4 Compatible
At-a-time Access	Maximum 10 users
Video/Audio Codec	H.264, MPEG4, MJPEG / G.711 (Triplex Streaming)
Sensor In/Alarm Out	N/A
Audio Line In/Out	N/A
Power Source	DC12V / POE Built-in
Power Consumption	Less than 4.5Watts (350mA)
Operating Temp.	-10℃ ~ 55℃ (Humidity :0%RH ~ 90%RH)
Size (mm)	65Ø(Bullet Diameter)
Weight	393 g (gift-box packing)

Option

- Lens (Fixed)
f= 6mm, 8mm, 12mm, 16mm, 25mm

OUTDOOR IR-BULLET IP CAMERA

• IP camera connection

Connect LAN cable to RJ45 jack of camera

Connect the other end LAN cable to RJ45 jack of router or hub

If you are not using POE switcher to provide the power to the IP camera, connect regulated a DC12V power adaptor to the IP camera.

Wait for about 50 seconds until the camera initialization is completed

Factory Default IP address is **192.168.1.30**

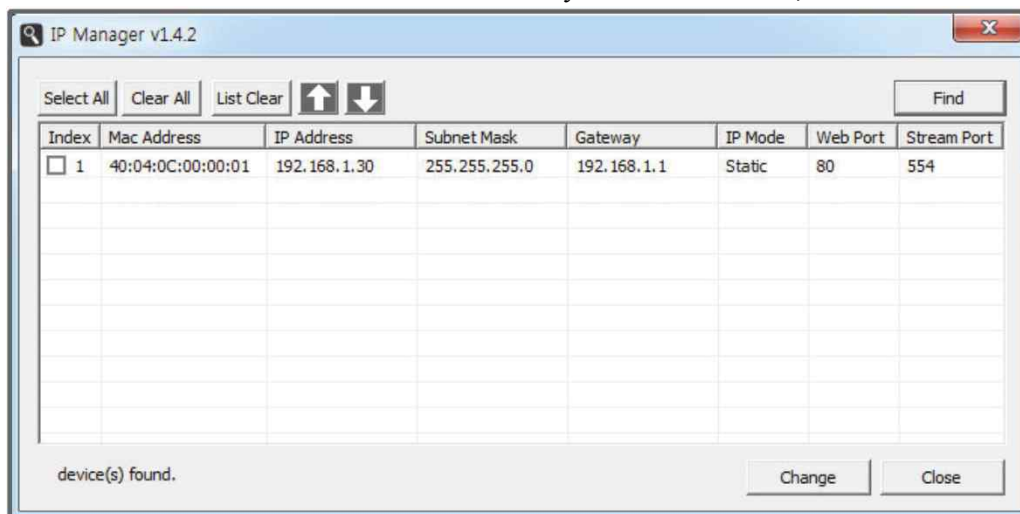
Factory Default ID & Password are **admin / admin.**

• Using IP manager

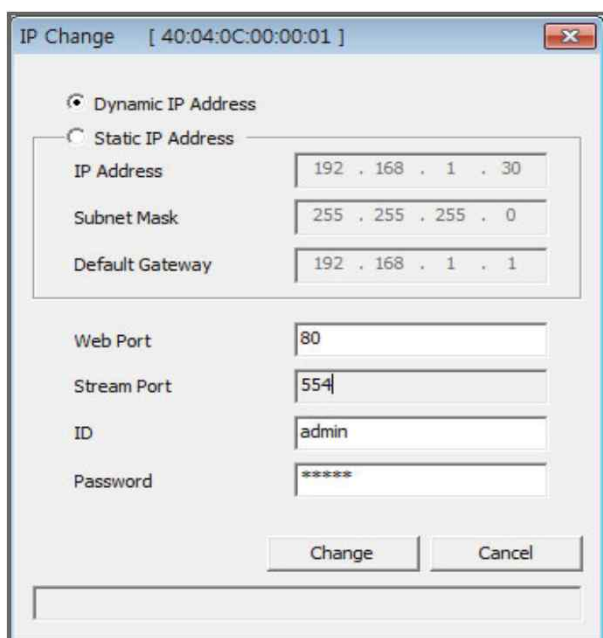
You can simply change the IP address by using 'IP Manager' provided.

Run IP manager as administrator.

click "Find" button when the IP camera is connected to your PC or network, all IP address will appear.



Choose & change the IP address of camera you want to change and click "change" Button



After click the "change" button left window will be appeared. Once you click "change" button, the camera will reboot for 10second.

After reboot the camera, the changed IP address will be applied and appeared.

• Checking Video by Web Viewer

Run web browser and Input the IP address which taken from IP manager.

• Supported O/S & Web Browser

- O/S : Windows7, 8, 10, MAC

- Browser : Internet Explorer 11 or higher, Firefox, Safari, Opera

* Monitoring videos can be operative only under IE with Active-X installation.