

DIM-P6110-POE

IP MINIATURE CAMERA

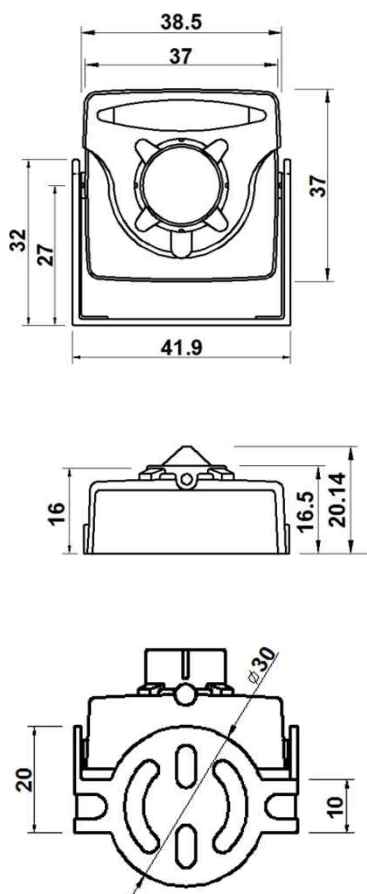


Main Features

- 1/2.9" 2.19M Sony Exmor CMOS Sensor
- 2Mega Pixels (Max. 1080p25/30)
- Pinhole f=3.7mm M/P Lens
- Providing Cable type POE
- Onvif Ver. 2.4 Compatible with H.264, MPEG4 and MJPEG
- Box Miniature Housing(37x37) with U type swivel bracket



Dimension



Specifications

Model	DIM-P6110-POE
Signal System	IP (Network) – Embedded Linux
Pickup Device	1/2.9"(D-6.23mm) 2.1M SONY Exmor CMOS Sensor
Scanning System	Progressive Scan (16:9)
Total Pixels	2.24M [2000(H)x1121(V)]
Active Pixels	2.12M [1936(H)x1097(V)]
Min. Illumination	0.2Lux
No. of IRED	N/A
Video Out (RJ45)	Up to 30fps @ 1920x1080p (1920x1080, 1280x1024, 1280x960, 1280x720, 1024x768, 640x480, 320x240)
Lens	Pinhole f=3.7mm board Super-cone type, F2.5
Lens (Mount)	Board type (M12)
Angle of View	90°(D), 76°(H), 41.4°(V)
OSD	Via Webpage Viewer
Camera Title	Off, On(Max. 10 Characters)
Language	English, Korean
Exposure	AE, Manual
White Balance	Auto, Indoor, Outdoor, Fluorescent
DWDR	Off, On(1 ~ 5 Steps)
Day & Night Mode	Auto, Day, Night, EXT.
Electronic Shutter	1/25(30)~1/15,000sec
Noise Reduction	Off, On (1~63 Setps)
DSS(Sens-up)	N/A
Mirror	Off, On(Mirror, Flip, Both)
Other Features	Motion Detection(48 Zones), Privacy Mask(6 Zones) etc.
Network Protocol	TCP/IP, UDP/IP, RTP, RTSP, RTCP, NTP, HTTP DHCP, FTP, SMTP, DNS, DDNS Onvif 2.4 Compatible
At-a-time Access	Maximum 10 users
Video/Audio Codec	H.264, MPEG4, MJPEG / G.711 (Triplex Streaming)
Sensor In/Alarm Out	N/A
Audio Line In/Out	N/A
Power Source	DC12V (Cable POE)
Power Consumption	Less than 1.7Watts (140mA)
Operating Temp.	-10℃ ~ 55℃ (Humidity :0%RH ~ 90%RH)
Size (mm)	38.5(W)x37(D) (without Bracket)
Weight	138 g (gift-box packing)

IP MINIATURE CAMERA

• IP camera connection

Connect LAN cable to RJ45 jack of camera

Connect the other end LAN cable to RJ45 jack of router or hub

If you are not using POE switcher to provide the power to the IP camera, connect regulated a DC12V power adaptor to the IP camera.

Wait for about 50 seconds until the camera initialization is completed

Factory Default IP address is **192.168.1.30**

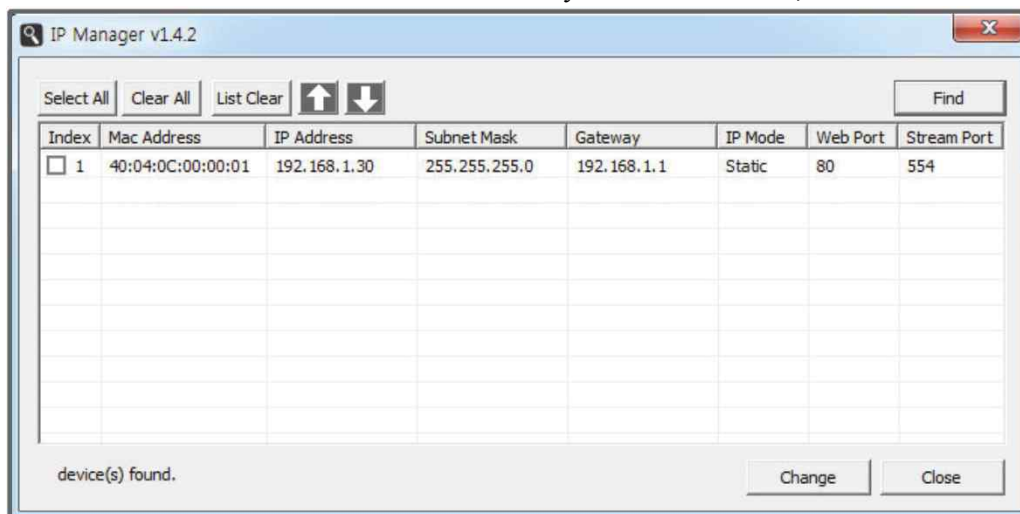
Factory Default ID & Password are **admin / admin.**

• Using IP manager

You can simply change the IP address by using 'IP Manager' provided.

Run IP manager as administrator.

click "Find" button when the IP camera is connected to your PC or network, all IP address will appear.



Choose & change the IP address of camera you want to change and click "change" Button



After click the "change" button left window will be appeared. Once you click "change" button, the camera will reboot for 10second.

After reboot the camera, the changed IP address will be applied and appeared.

• Checking Video by Web Viewer

Run web browser and Input the IP address which taken from IP manager.

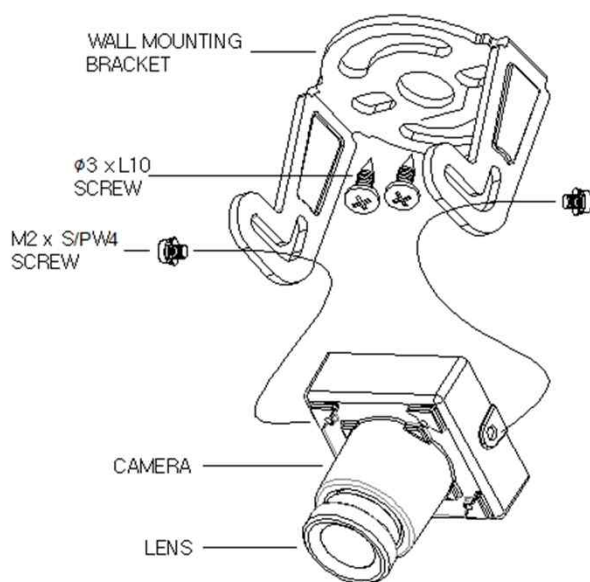
• Supported O/S & Web Browser

- O/S : Windows7, 8, 10, MAC

- Browser : Internet Explorer 11 or higher, Firefox, Safari, Opera

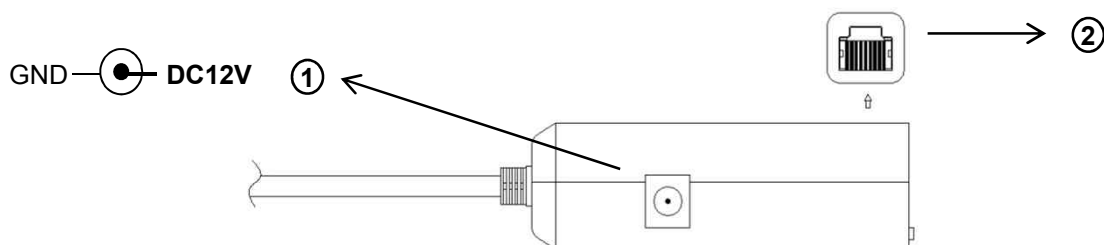
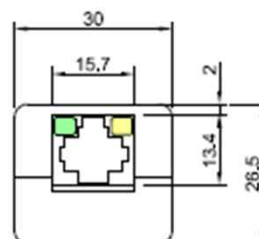
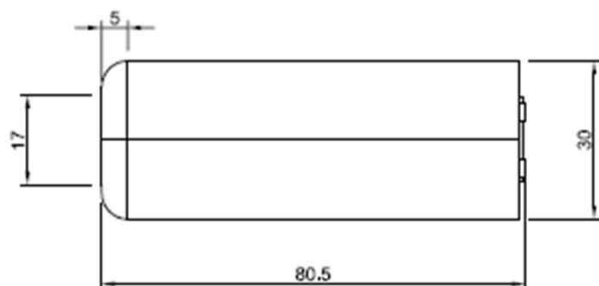
* Monitoring videos can be operative only under IE with Active-X installation.

Camera Mounting Instruction



- There are three(3) of each Ø3xL10 screw and M2xS/PW4 screw together with a swivel bracket in the accessory package.
- Please use two(2) of the screws as shown left. We are providing one of each extra screw in the package.
- If you do not use M2xS/PW4 screws provided, it can **damage** the camera board inside housing. Such the damage will be your responsibility.

Dimension of POE on cable



	Function	I/O	Note	Remarks
①	POWER	IN	Camera power input (Not required when POE works)	DC12V
②	VIDEO/POE/CONTROL	IN/OUT	H.264 video output, Power over Ethernet, Control (RJ45)	